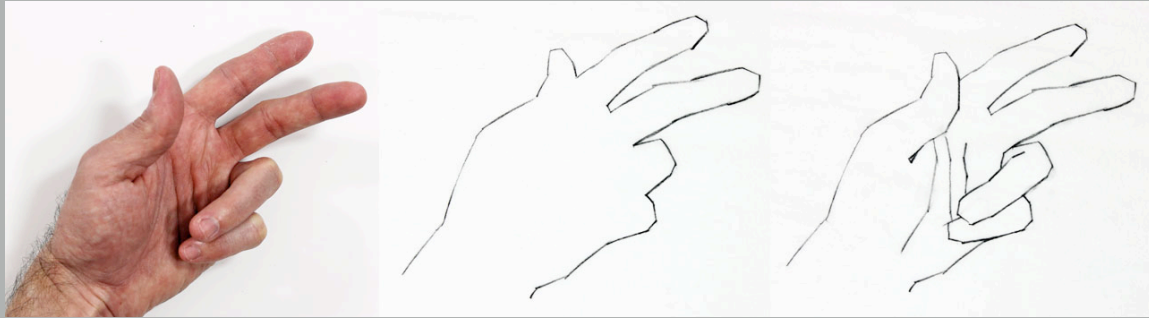


## Ms. Manville 6th Grade Drawing Unit



imagecitation:<http://www.learn-how-to-draw-and-paint-great.com/images/inner-contour-hand.jpg>

Objective	Corresponding Standard
Students will study and research various drawing techniques, including contour line drawings and value studies of their own hand, sculptures of hands holding fruit, and small 3D wooden prisms.	2.8 For line, use and be able to identify various types of line, <i>for example in <b>contour drawings</b>, calligraphy, freehand studies from observation, memory, and imagination, and schematic studies</i>
Students will draw their own hand, sculptures of hands holding fruit, and small 3D wooden prisms utilizing direct representation of those objects, relative size, and relative value.	3.4 Create 2D and 3D <b>representational</b> artwork from direct observation in order to develop skills of perception, discrimination, physical coordination, and memory of detail
Students will maintain a portfolio of these various sketches and techniques.	4.7 Maintain a portfolio of sketches and finished work

### Daily Lessons

<b>Materials needed</b>	Non Consumables: Sculpture of hands holding fruit, wooden prisms, pencil sharpeners Consumables: Kneaded erasers, drawing pencils, tortillion stumps
-------------------------	---

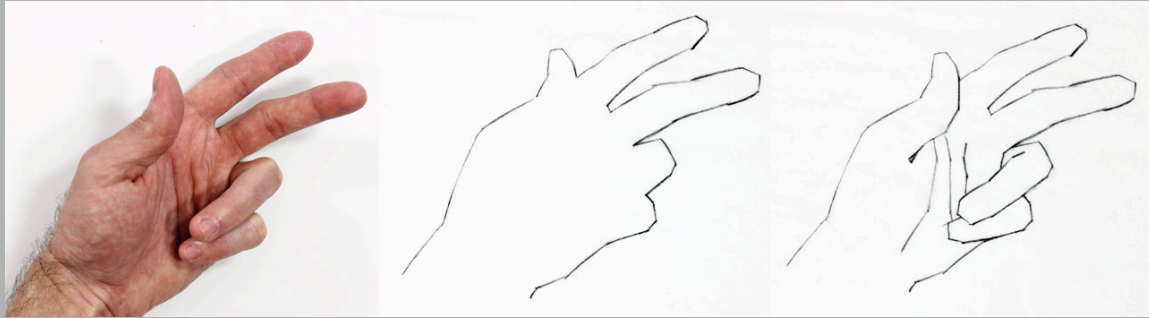
## Ms. Manville 6th Grade Drawing Unit



imagecitation:<http://www.learn-how-to-draw-and-paint-great.com/images/inner-contour-hand.jpg>

<p><b>Lesson One</b>  <b>Date:</b></p>	<p>Students will watch various videos on Youtube of time lapsed value studies and contour line drawings to help introduce the drawing lesson. Students will watch a demonstration of Miss Manville using both techniques.</p>
<p><b>Lesson Two</b>  <b>Date:</b></p>	<p>Students will be given a mini lesson on how to draw their own hand using contour line drawing techniques and the first 5 drawings are due. Students will use an Ipad to take pictures of their sculptures, and compare a black and white photo of the sculpture with their drawings of the sculpture, to compare the relative value of that object in their drawing and in the photo, for accuracy.</p>
<p><b>Lesson Three</b>  <b>Date:</b></p>	<p>Students will be given a mini lesson on value study. Miss Manville will show how light creates value by turning on and off the lights on plaster sculptures of hands holding fruit. Students will be expected to use contour line drawing techniques to draft the drawings using relative size, then value sketches to finish the drawings. Second 2-5 drawings are due.</p>
<p><b>Lesson Four</b>  <b>Date:</b></p>	<p>Students will create one final drawing of wooden prisms as a performance task assessment of their skills they have learned. The performance task will take one class period. (40 minutes)</p>
<p><b>Assessment</b></p>	<p>-Performance Based Assessment lesson four above, rated on a 4 point rubric using relative size and value as the focus correction areas.              -Assessment of their portfolio of sketches: range of technique, growth, and ability to keep their portfolio together will be assessed.</p>

## Ms. Manville 6th Grade Drawing Unit



imagecitation:<http://www.learn-how-to-draw-and-paint-great.com/images/inner-contour-hand.jpg>

<b>Hallway Exhibition</b>	Students will be required to display their drawings in the hallways of Brayton and in additional shows in North Adams if chosen.
<b>Differentiation</b>	<p>-Students may have issues with hand/eye coordination for drawing, Miss Manville will give every student one on one help as needed</p> <p>-Various visual and auditory aids such as ipad photos in real time, time lapse movies, demonstrations, and one on one discussions and help will be utilized for all learners.</p>
Links and citations	<p>Mark Crilley drawing an eye:  <a href="https://www.youtube.com/watch?v=WhAQUcLj-Ts">https://www.youtube.com/watch?v=WhAQUcLj-Ts</a></p> <p>A realistic tea pot:  <a href="https://www.youtube.com/watch?v=eTWHWFwluis">https://www.youtube.com/watch?v=eTWHWFwluis</a></p> <p>Contour line drawing of hands:  <a href="https://www.youtube.com/watch?v=Eu9sUWLfGng">https://www.youtube.com/watch?v=Eu9sUWLfGng</a></p> <p>Contour line drawing of a face, continuous  <a href="https://www.youtube.com/watch?v=SL3LiR_pvsU">https://www.youtube.com/watch?v=SL3LiR_pvsU</a></p> <p>Drawing of a still life, using measurement  <a href="https://www.youtube.com/watch?v=bKKff0TXJR0">https://www.youtube.com/watch?v=bKKff0TXJR0</a></p>
Reflection/Notes	